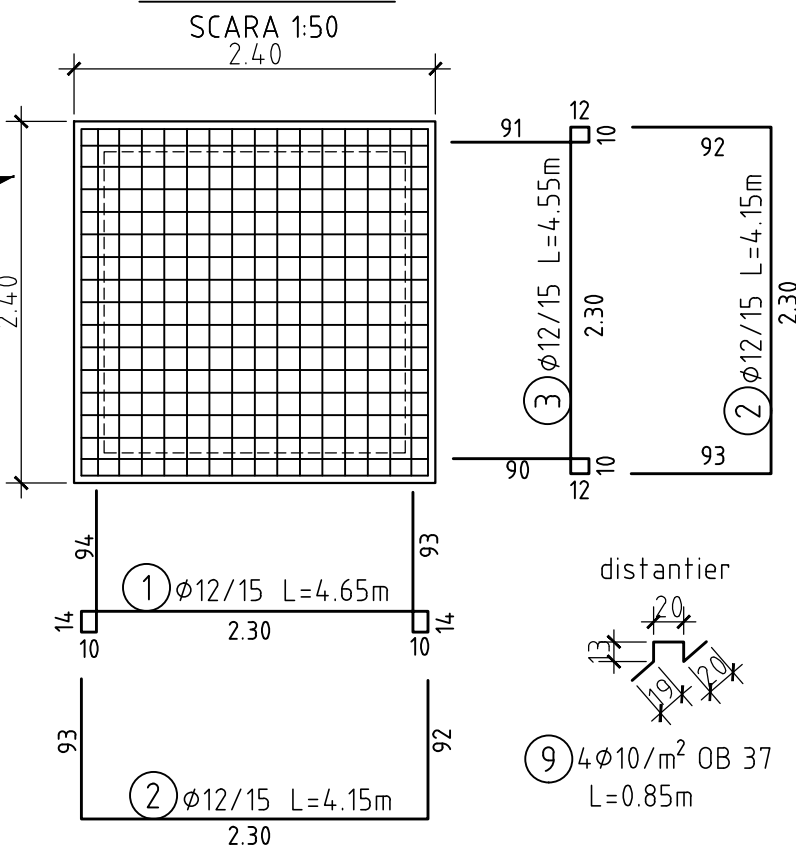
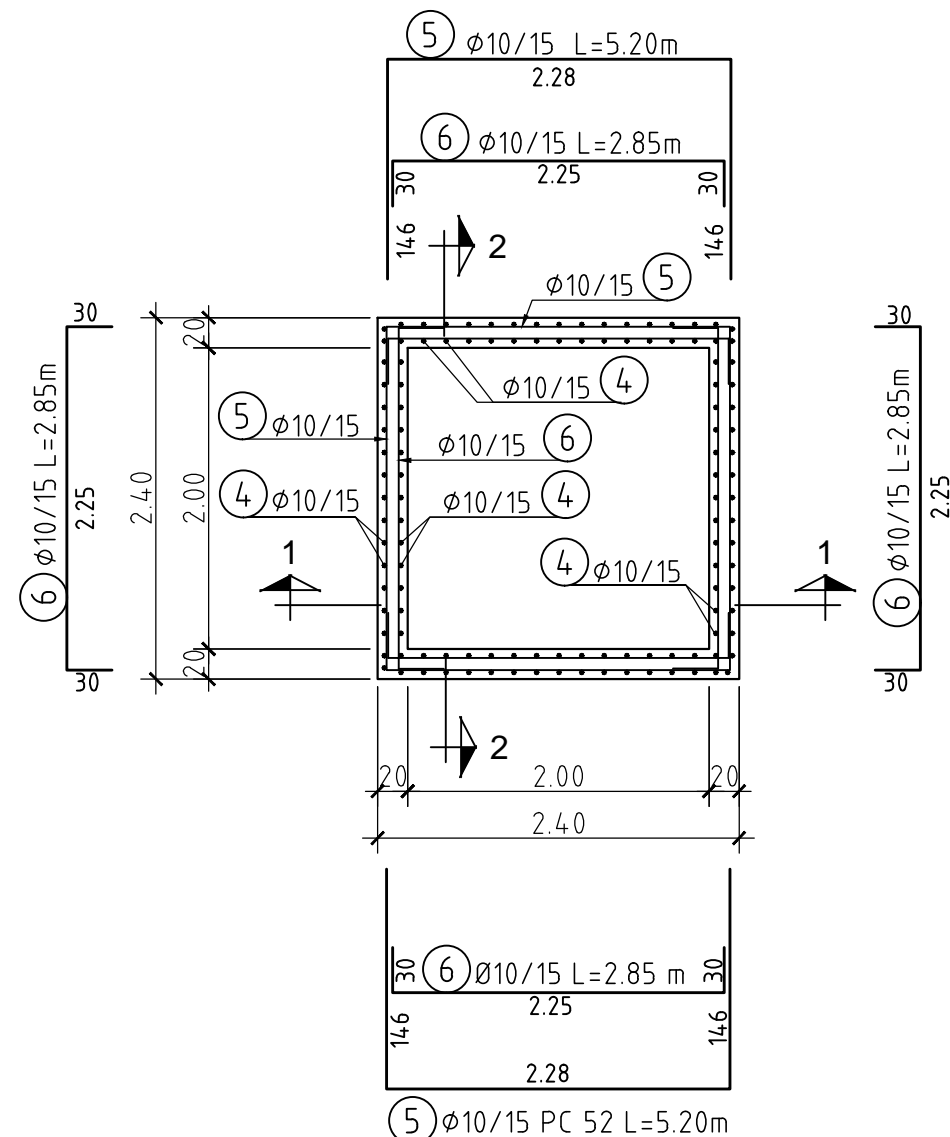


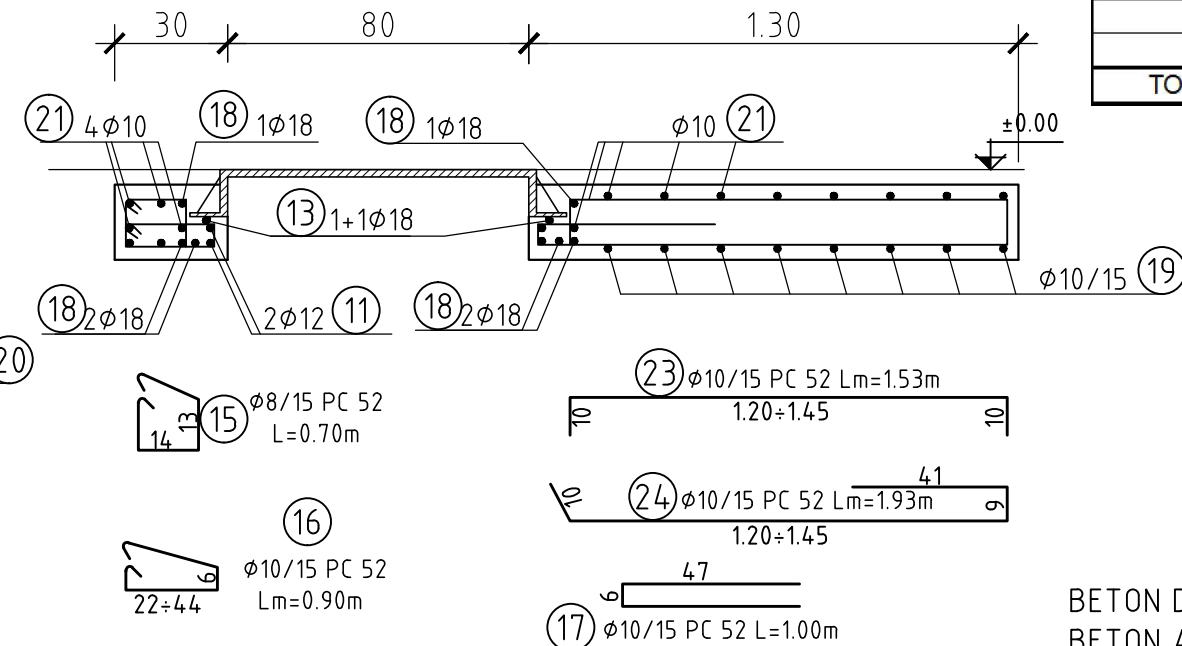
ARMARE RADIER



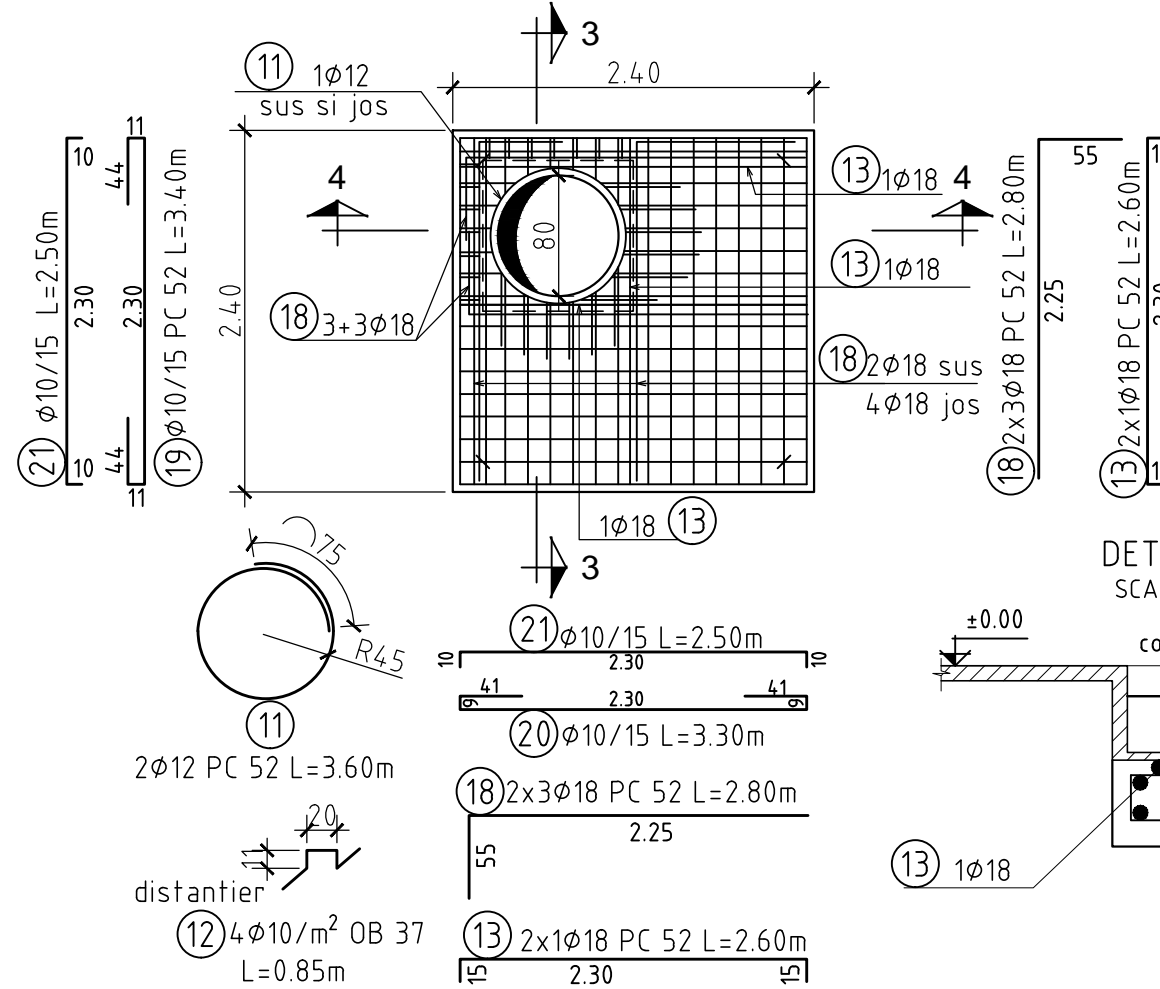
SCARA 1:50



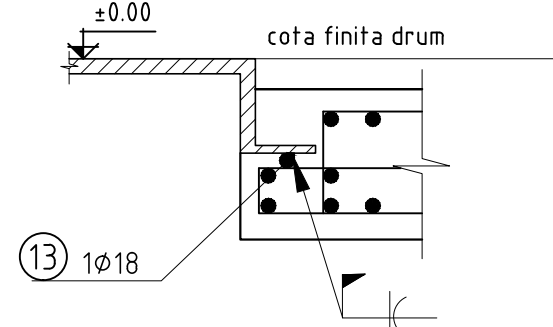
SCARA 1:20



SCARA 1:50



SCARA 1:10

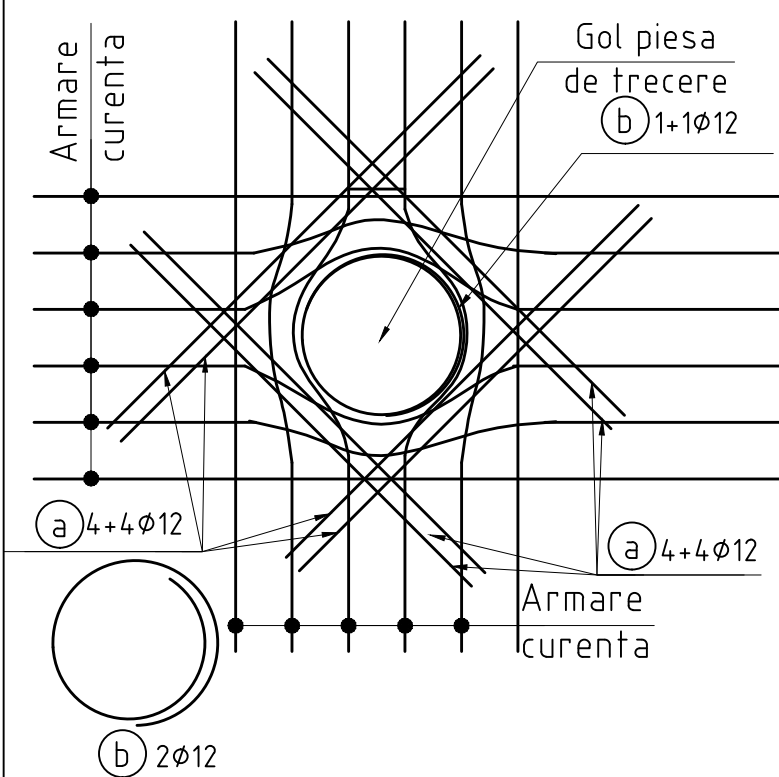


Marca	ø	Buc	Lungime	OB 37		PC52				
				ø 6	ø 10	ø 8	ø 10	ø 12	ø 18	ø 20
1	12	17	4.65					79.05		
2	12	34	4.15					141.10		
3	12	17	4.55					77.35		
4	10	120	2.85				342.00			
5	10	38	5.20				197.60			
6	10	76	2.85				216.60			
7	6	76	0.60	45.60						
8	6	108	0.30	32.40						
9	10	23	0.85		19.55					
10	20	10	2.00							20.00
11	12	2	3.60					7.20		
12	10	16	0.85		13.60					
13	18	4	2.60						10.40	
14	8	7	0.65			4.55				
15	8	7	0.70			4.90				
16	10	12	Lm=0.90			10.80	10.80			
17	10	12	1.00				12.00			
18	18	12	2.80						33.60	
19	10	10	3.40				34.00			
20	10	10	3.30				33.00			
21	10	26	2.50				65.00			
22	10	6	Lm=1.98				11.88			
23	10	12	Lm=1.53				18.36			
24	10	6	Lm=1.93				11.58			
25	10	4	1.05		4.20					
26	12	8	1.70					13.60		
27	12	2	1.40					2.80		
28	12	32	1.85					59.20		
29	12	4	2.00					8.00		
ml/ø				78.00	37.35	20.25	952.82	388.30	44.00	20.00
kg/ml				0.222	0.617	0.395	0.617	0.888	1.998	2.466
kg/ø				17.32	23.04	8.00	587.89	344.81	87.91	49.32
TOTAL		kg/buc		40		1078				

ALIZADE 68/10 X 0 D=33 53 65M II B M (S II) 33 E D

C8/10,X0,Dmax 32,S3,CEM II B-M (S-LL) 32.5 R
C 25/30,XC4,XF3,CI0.2,Dmax 22,S3,P4,CEM II/A-S 32.5R
OB 37, PC 52

SCARA 1:20



DN mm	Bara marca a		Bara marca b	
200	26	1.70	27	1.40
400	28	1.85	29	2.00

DN	Bara marca a		Bara marca b	
mm				
200	26	1.70	27	1.40
400	28	1.85	29	2.00

Rev	Nume	Ver	Aprb	Data	Descriere



eptisa

Plansa:

Retele apa
Camin tip 13-Plan Armare

Plansa nr.	Revizia
------------	---------

CS-RE-PT/DA-A-R-13.2

0